



ATG57



APK37



Optional Black Pedestal Base



Optional Gold Pedestal Base

ACRYLIC AWARDS

These 3/8" thick acrylic awards come standard with either a black or white base, however there is an optional upgrade to a gold or black pedestal base. The clear award is a great gift for any academic, corporate, service, safety, incentive or recognition award. Show your appreciation with this highly affordable item.

APK37 Peak • ATG57 Triangle

Qty	1	12	24	48	4c
APK37 w3"x7"	\$14.90	14.16	13.71	13.29	
ATG57 w5"x7"	\$16.86	16.03	15.52	15.04	

Price includes engraving as shown on 1 location. Black or white base standard (specify or black will be used).

Engravable Area: APK37 w2"x4"; ATG57 w2-1/2"x2-1/2".

Setup Charge: \$50(g); setup charges will apply to repeats as well. **Optional Base:** For black pedestal base, add .99(g); for gold pedestal base, add \$1.99(g). Pedestal base cannot be used w/triangle shape.

Colors: clear, jade.

Pack & Weight: 12/7lbs.

Lead Time: 10 Days.



AGR37



AST37



Optional Black Pedestal Base



Optional Gold Pedestal Base

DESIGNER ACRYLIC AWARDS

These 3/8" thick acrylic awards come standard with either a black or white base, however there is an optional upgrade to a gold or black pedestal base. The clear award is a great gift for any academic, corporate, service, safety, incentive or recognition award. Show your appreciation with this highly affordable item.

AST37 Star • AGR37 Grooved

Qty	1	12	24	48	4c
AST37 w3"x7"	\$26.46	25.16	24.36	23.61	
AGR37 w3"x7"	\$26.17	24.88	24.09	23.35	

Price includes engraving as shown on 1 location. Black or white base standard (specify or black will be used).

Engravable Area: AST37 w2-1/2"x2-1/2"; AGR37 w2-1/4"x4".

Setup Charge: \$50(g); setup charges will apply to repeats as well. **Optional Base:** For black pedestal base, add .99(g); for gold pedestal base, add \$1.99(g).

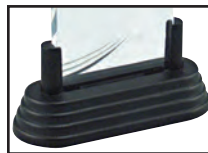
Colors: clear, jade.

Pack & Weight: 12/7lbs.

Lead Time: 10 Days.



AMA37



Optional Black Pedestal Base



Optional Gold Pedestal Base

MARBLEIZED ARCH AWARDS

Reward those clients, colleagues, or associates with this marbleized arch award that enhances their achievements. An excellent engraved gift that can be an award for academic, sports, employee, corporate, or incentive reasons. The translucent acrylic award has marble patterns, gold accents and your choice of base design. Choose black or white standard base or upgrade to a gold or black pedestal base.

AMA37 Marbleized Arch awards (3/8" thick)

Qty	1	12	24	48	4c
AMA37 w3"x7"	\$20.60	19.59	18.97	18.38	

Price includes engraving as shown on 1 location. Black or white base standard (specify or black will be used).

Engravable Area: w2"x5-1/2".

Setup Charge: \$50(g); setup charges will apply to repeats as well. **Colors:** blue, black, burgundy, green.

Optional Base: For black pedestal base, add .99(g); for gold pedestal base, add \$1.99(g).

Pack & Weight: 12/7lbs.

Lead Time: 10 Days.

GENERAL INFORMATION (page 68-69). **Absolute Minimum:** as shown above. Please call factory for pricing above end column. **Personalizations:** add \$3.50(g) per line. **Copy Change:** \$30(g). If more than three lines change or logo changes, new setup charges will be applicable. **Standard Features/Options:** Acrylic Awards, Designer Acrylic Awards and Marbleized Arch Awards- Black or white base available (black standard unless otherwise specified). For black pedestal base, add .99(g); for gold pedestal base, add \$1.99(g). Pedestal base cannot be used w/triangle shape. **Reflection Awards-** Available in clear only. Black acrylic base with gold mirror included.

LASER RESIN AWARDS

3/8" thick engravable, awards with gold trim and black base. A completely unique book end type award with gold accents and etched imprint. Sits atop a fixed black base and comes individually boxed. Made from 3/8" thick resin for an out of the ordinary recognition and rewarding item. Choose from Rectangle w6"x8", Fan w6-1/4"x8" and Oval w5-1/2"x8".

LR100

Qty	1	12	24	48	4c
LR100	\$22.45	21.35	20.67	20.03	

Price includes engraving as shown on 1 location.

Engravable Area: Rectangle w3"x5"; Oval w2-1/2"x4"; Fan w3"x3-1/2".

Setup Charge: \$50(g); setup charges will apply to repeats as well.

Choose Shape: Rectangle, Oval, Fan.

Pack & Weight: 6/14lbs.

Lead Time: 10 Days.



Rectangle
w6"x8"

Oval
w5-1/2"x8"

Fan
w6-1/4"x8"

REFLECTION AWARDS

Sculptured 3/4" acrylic awards with two-tone gold reflective base. Reflect your good taste by offering employees, associates and civic organizations the gold medal treatment with these attractive awards from Lasercrest. Translucent acrylic awards feature black base with mirrored top and clear acrylic sculpture that reflects a golden hue. Great for Award Programs.

RIC46 Ice Top • RIC510 Ice Top

ROP46 Optima • ROP510 Optima

Qty	1	12	24	48	4c
RIC46 w4"x6"	\$43.31	41.18	39.87	38.65	
RIC510 w5"x10"	\$62.49	59.42	57.53	55.76	
ROP46 w4"x6"	\$41.98	39.92	38.65	37.46	
ROP510 w5"x10"	\$61.46	58.43	56.58	54.84	

Price includes engraving as shown on 1 location.

Engravable Area: Imprints will be setup to maximum imprint area for design chosen unless otherwise specified.

Setup Charge: \$50(g); setup charges will apply to repeats as well.

Pack & Weight: RIC46 12/15lbs; RIC510 12/25lbs;

ROP46 12/11lbs; ROP510 12/19lbs.

Lead Time: 10 Days.



ROP46

RIC510

BEVELED GLASS CRESCENT AWARD

This 3/16" thick self standing, beveled glass, crescent award has a jade accent that stands alone as a top shelf addition to your company image. This classy award is an excellent reward for all academic, corporate, incentive, safety, service, and recognition purposes. Great to display at home or in office. Individually boxed.

BGC64 Jade Glass (3/16" thick)

Qty	1	10	20	40	4c
BGC64 w6"x4"	\$8.45	8.04	7.78	7.54	

Price includes engraving as shown on 1 location.

Engravable Area: w3"x2-1/2".

Setup Charge: \$50(g); setup charges will apply to repeats as well.

Pack & Weight: 10/6lbs.

Lead Time: 10 Days.



BGC64

Imprints will be setup to maximum imprint area for design chosen unless otherwise specified. **Production Time:** applies to one location orders with camera-ready art once credit is approved and art/order questions have been answered. Fax proofs, e-proofs or pre-production samples will increase production time.

Art Instructions: see page 83.